

Monday the 8th to Friday the 12th of November 2021

Dear WeLearn Community:

Come to the Center! We would really like to see more Learners join us in the center for our PBL and Innovation Sessions. Our PBL and Innovation courses were designed for on-site, group learning as the hands-on counterpart to our online core academic program.

Exercise Club



We have started our outdoor fitness program again at Lumpini Park. Trainer Joy is back with us to escort our Learners to the park for a running, fitness & calisthenics program — as well as lot of outdoor fun and exploration. The Learners will be joined by WeLearn staff members to ensure their safety. Trainer Joy is an accomplished marathon runner, having won a number of competitions in Thailand and competed internationally as well. She has also started focusing on triathlons more recently.

December Flex Month Program: We are exploring options to offer special Experiential Learning Programs during the first half of December. Two options we are considering are a fine arts and sports program at Patravdi School (www.patravadischool.com) in Hua Hin the week of December 6 and a mud house building adventure in Chiang Mai at the Pun Pun Center for Self Reliance (www.punpunthiland.org) the week of December 13 to 17. Please keep your calendar open!

The MAP Assessment: The Measurement of Academic Progress (MAP) Assessment is scheduled at **10 am – 3 pm, November 22, 2021, for the Middle Learners**, and **November 29, 2021, for the Primary and Secondary Learners**. The assessment will be administered at the center in Bangkok. More information may be found in the Learner Success section below!

PBL Showcase: Our PBL Showcase is where learners present to experts, peers, and parents the PBL projects they have been working on throughout the term. The PBL showcase will be on-site according to the schedule below:

Primary Learners: Friday, Dec 3rd, 2021 (10 am -12 pm)

Middle Learners: Wednesday, Dec 1st, 2021 (1 pm - 3 pm)

Secondary Learners: Tuesday, Nov 30th, 2021 (10 am - 12 pm)

As always, Upward and Onwards!!
CEO & Founding Father of WeLearn
David Doran

+++

Project-Based Learning (PBL)

Primary Learners: “Reducing Plastics in the Oceans”

This week, the primary learners worked on Milestone 4. They looked at ways to reduce the amount of plastic in the oceans. They conducted research and brainstormed ideas for reducing plastic in our daily lives. They also looked into various groups that work to reduce plastic pollution throughout the world. They will finish their solutions next week and then practice their presentation skills. You are doing a fantastic job, learners!

Middle Learners: “Starting a Business Like an Entrepreneur”

Middle Section learners completed their first month's budget calculator sheet this week. They finalized their income, profit, and profit margin on their budget calculator. They'll start working on the second two months' sheet next week, which will provide them with a plan for the first three months of their company plan. Finally, they'll be looking for ways to raise revenue. They will devise a strategy for obtaining bank loans by calculating a simple interest rate on their funds. Learners, you're doing a great job!

Secondary Learners: “Providing Quality Education to the Moken Community”

This week, the Secondary learners participated in a critique session. They received great comments from their peers on their initiatives and worked to improve their proposals. They're also focusing on developing their project prototypes. Our learners are working hard to prepare them. Keep up the good effort, learners!

Onsite STEM Innovation “NASA Mission Challenge”

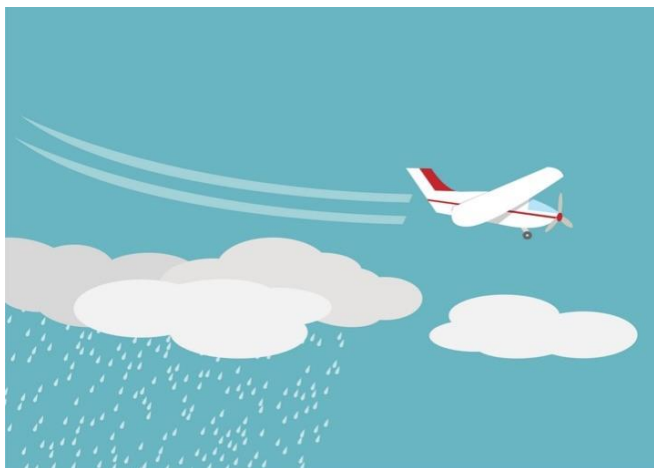
This week, our STEM innovation sessions was inspired by NASA mission of sending the first woman and next man to moon. Last Tuesday, our primary learners designed a model of NASA's Milo rover by using legos, motors, and multiple sensors. They were very excited to program their rover to explore the moon's surface. We continued our mission on Thursday, by designing a robotic arm for collecting moon's rocks samples

The Middle Learners were separated into designers, engineers, and the programmers' groups. On Tuesday our designers designed a 3D model of the moon base by using TinkerCad. Our engineers developed their idea of a space rover by using Legos, motors, and sensors. They continued our mission on Thursday by designing a spaceship and developing a rover game by using Scratch.



Astra Nova Conundrum Session

We dug deep into the Weather Conundrum this week. There were five options available. The fundamental dilemma was who should receive the company's secret chemical. The learners made their decisions and investigated the possibilities of the other options. They learned about Cloud Seeding, a real-life method of altering the weather of underdeveloped areas. We strongly encourage parents to discuss the Conundrums with their children!



Learner Success



MAP



Measures of Academic Progress

Measurement of Academic Progress (MAP) is a computerized adaptive test that helps schools improve learning for all learners and provide the required assistance to promote a child's academic growth. It measures the learner's strengths and helps that is needed in any specific areas, particularly in Reading and Math levels. It is an untimed evaluation that will be administered periodically to monitor the progress of every learner in relation to the global standards. It is widely used both in the U.S. and in most International Schools in Thailand.

We know that there have been concerns regarding the efficacy of our online academic providers, so this should validate that our learners are growing academically.

For more information, please visit <https://www.nwea.org/the-map-suite/family-toolkit/>, or contact us directly.